

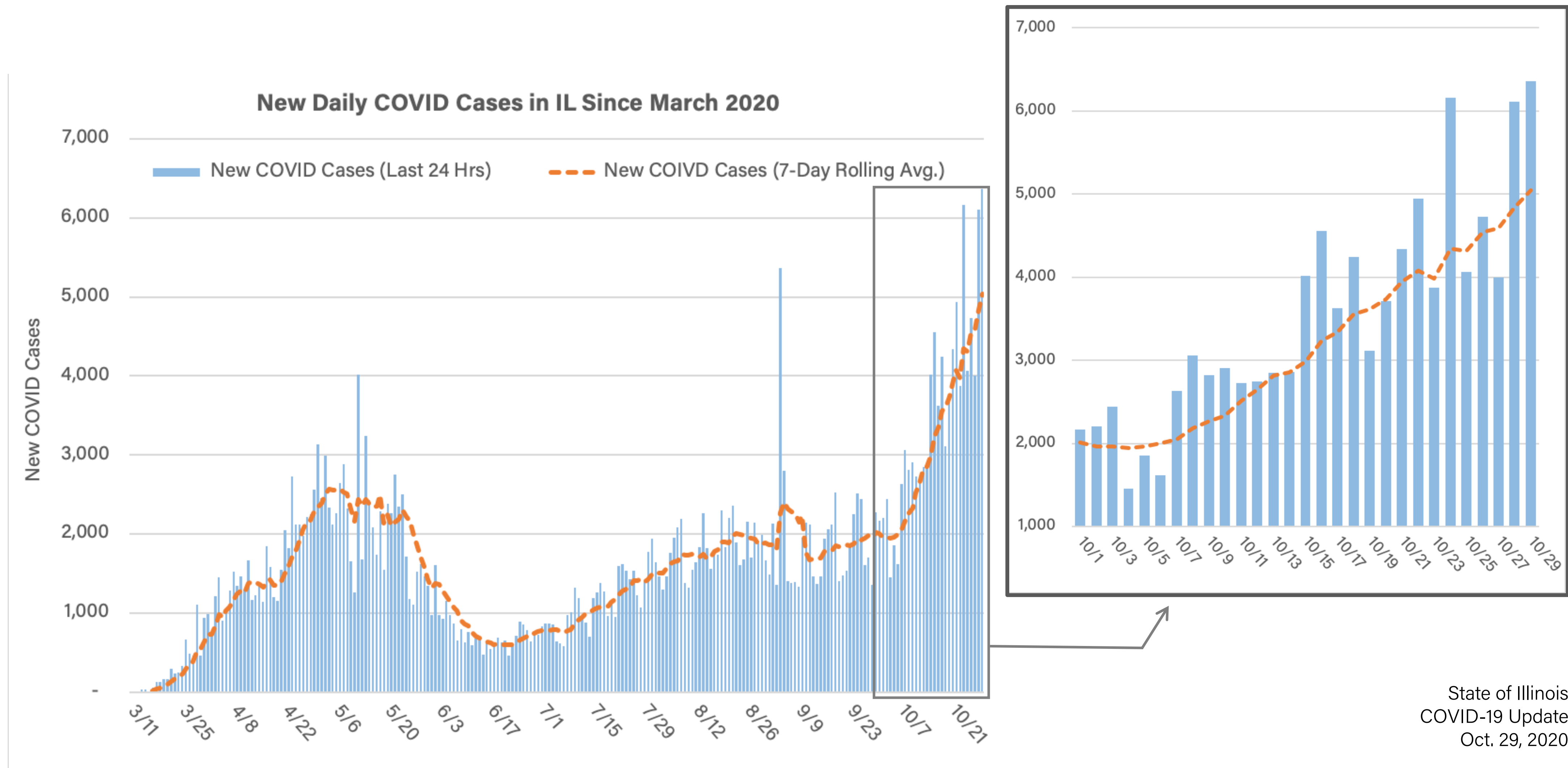
The seal of the State of Illinois is a circular emblem. It features an eagle with wings spread, perched on a shield with vertical stripes. The eagle is surrounded by a wreath. The outer ring of the seal contains the text "SEAL OF THE STATE OF ILLINOIS" at the top and "AUG. 26TH 1818" at the bottom. Inside the seal, there are the words "NATIONAL UNION" and the years "1868" and "1818".

COVID-19 Update

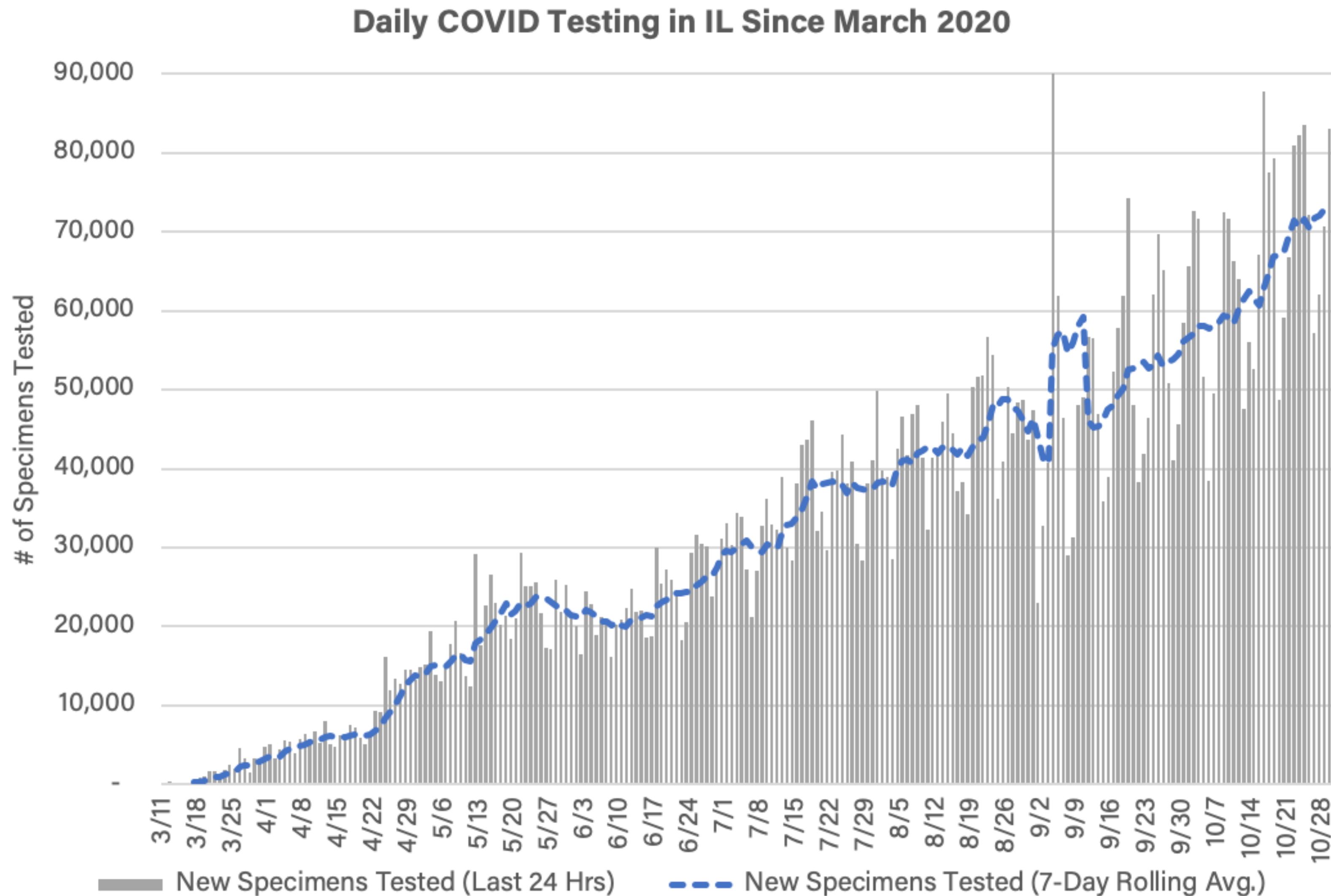
State of Illinois

Thursday, October 29, 2020

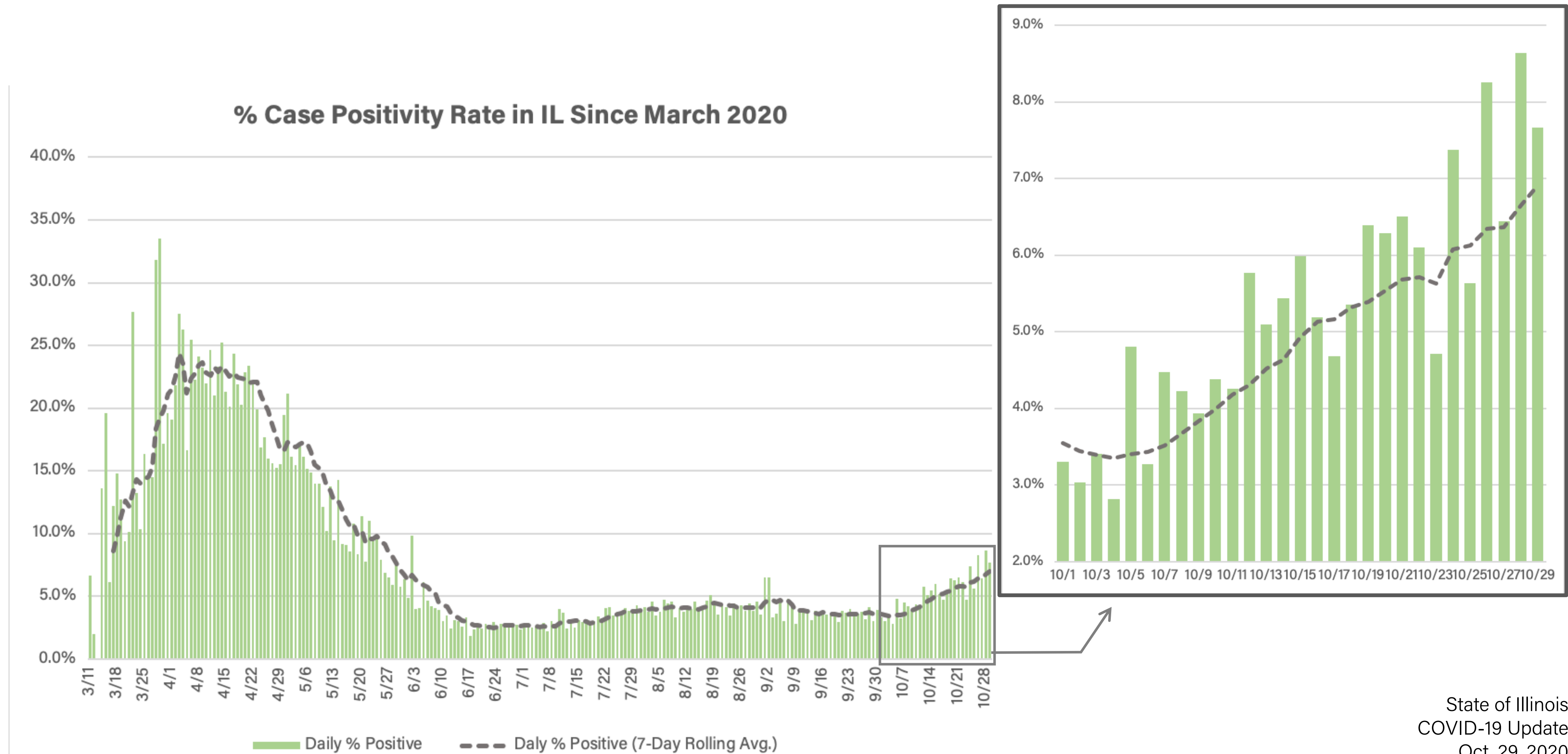
NEW COVID CASES **UP 151%** SINCE OCT. 1



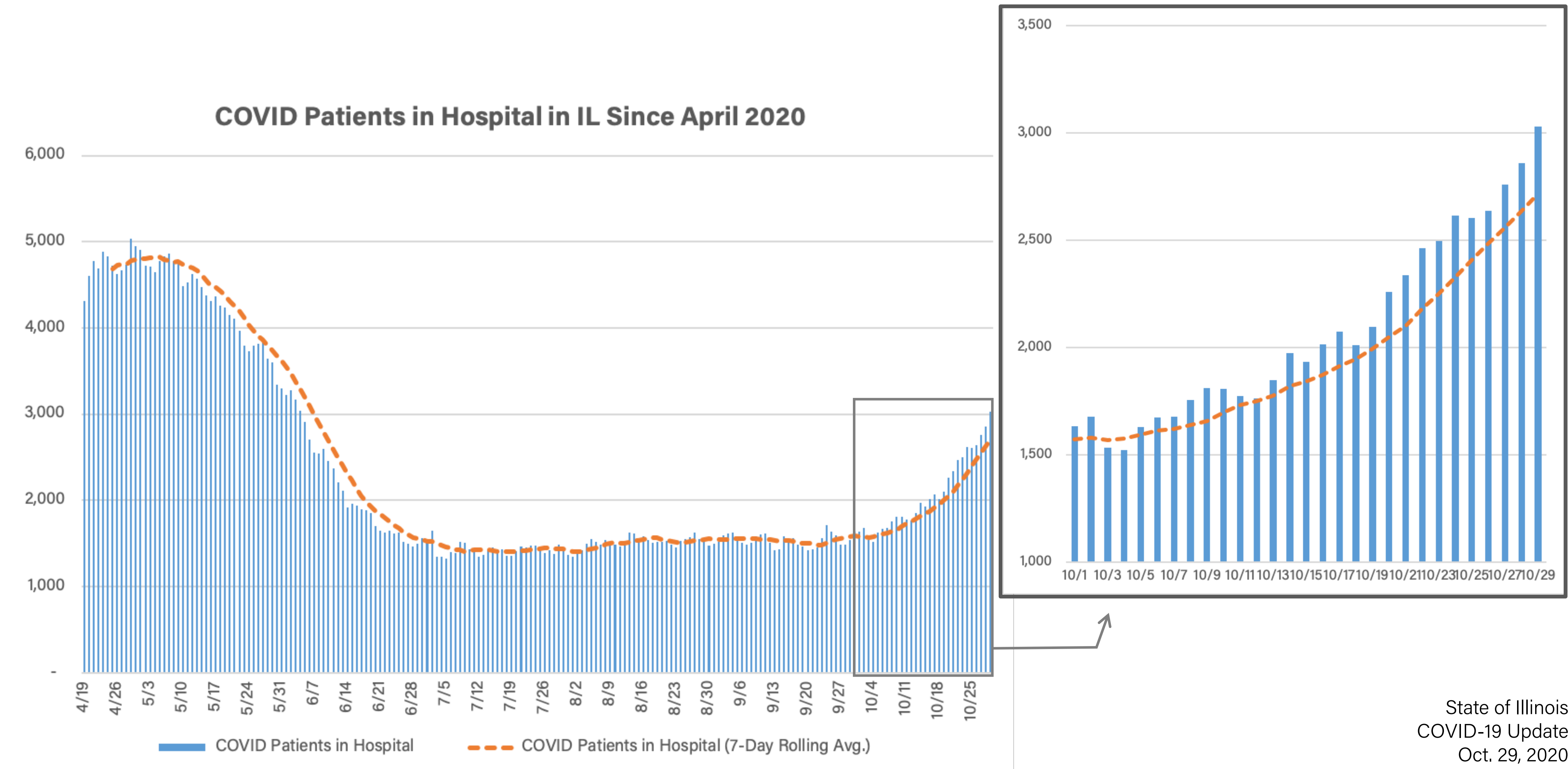
DAILY COVID TESTS NOW AVERAGING OVER 73K/DAY



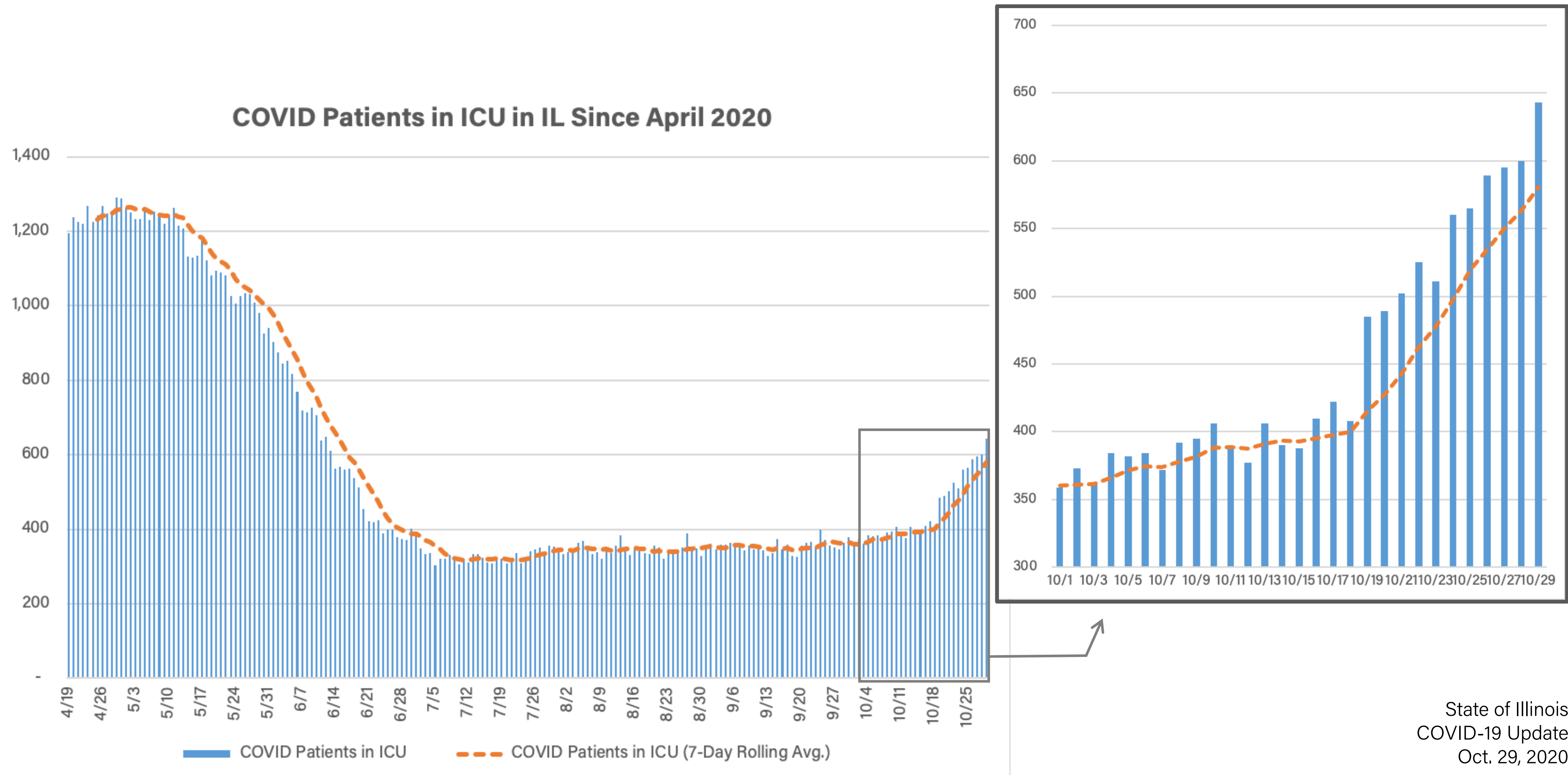
CASE POSITIVITY **UP 3.4%-POINTS** SINCE OCT. 1



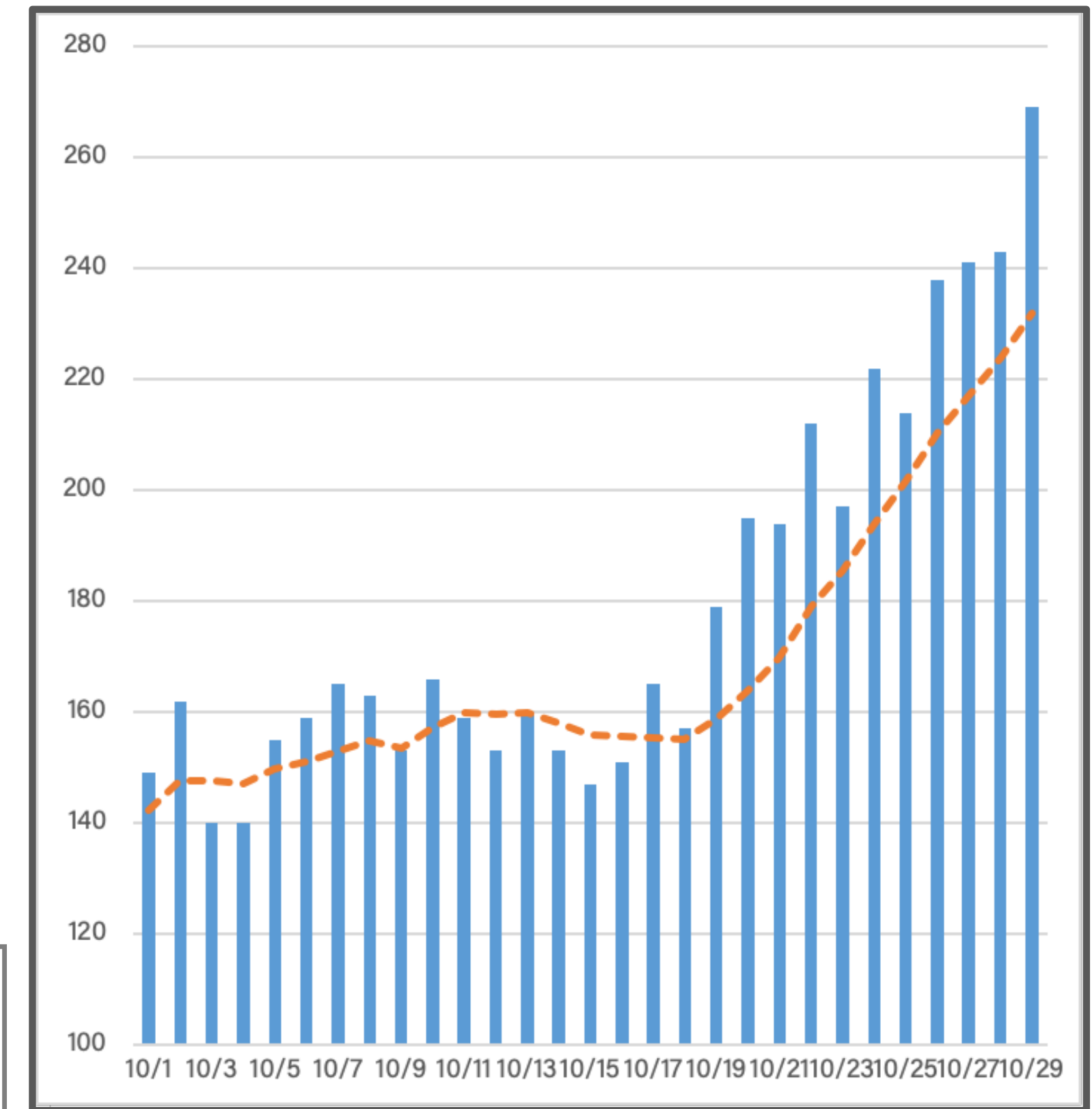
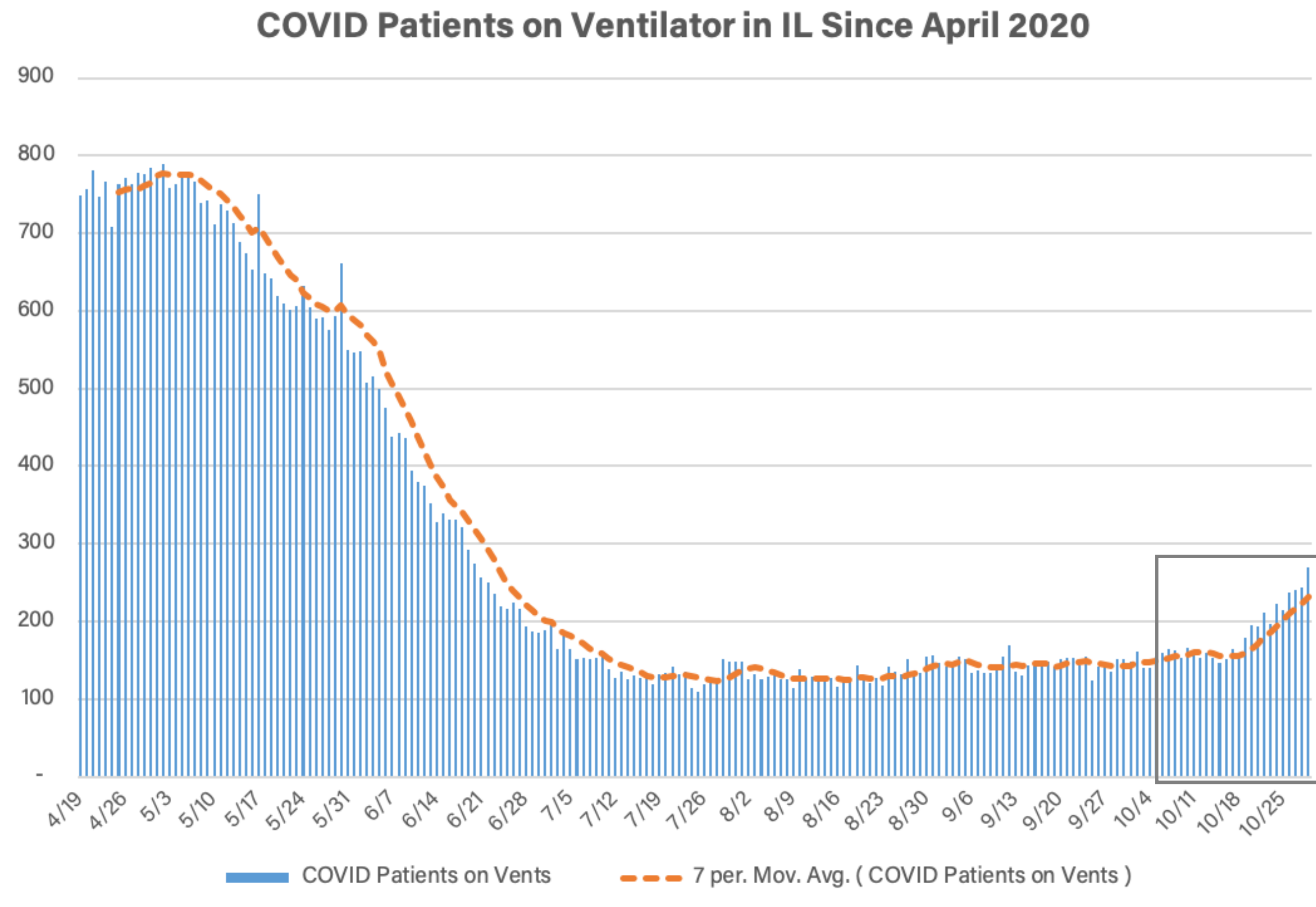
COVID PATIENTS IN HOSPITAL **UP 73%** SINCE OCT. 1



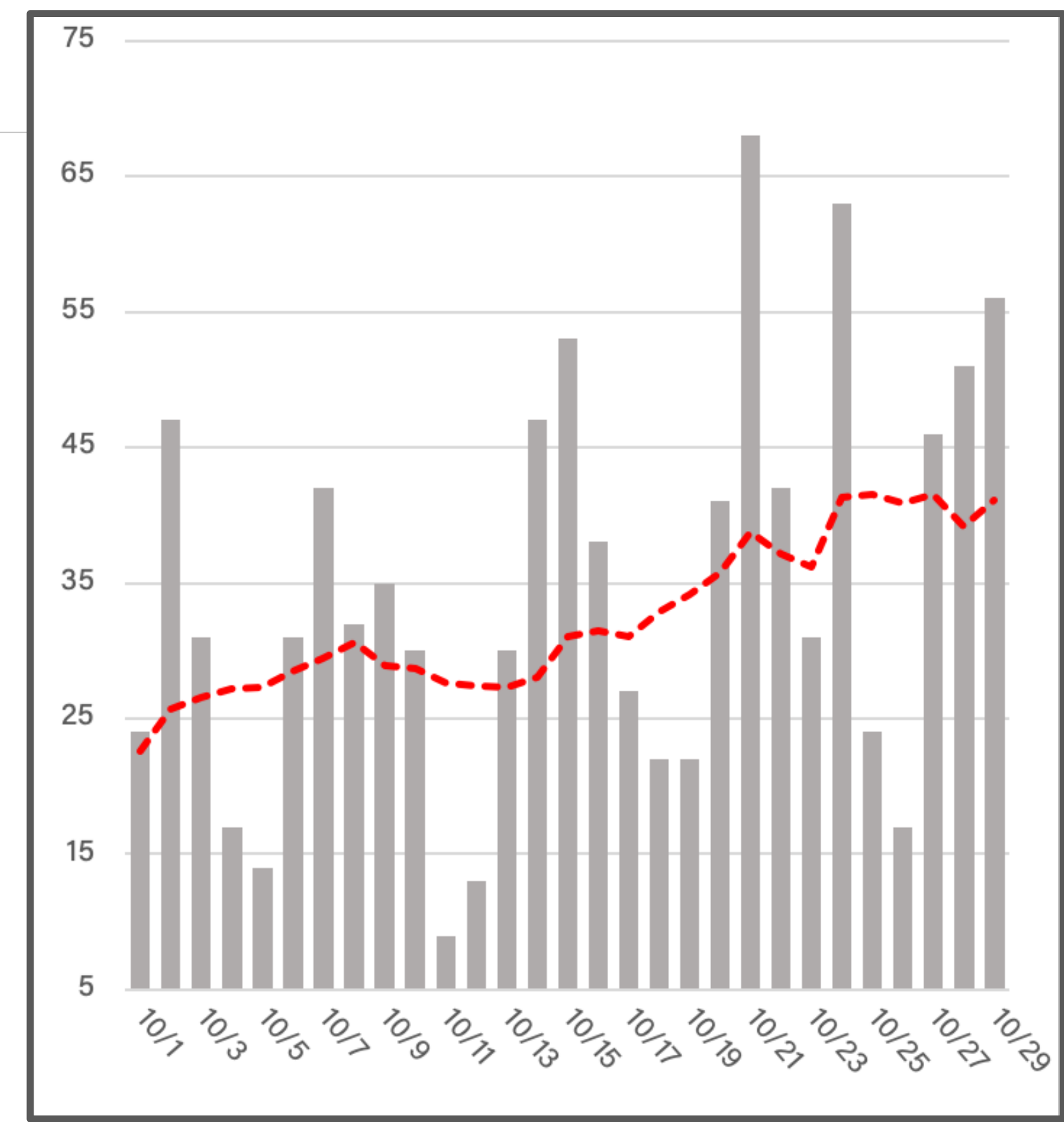
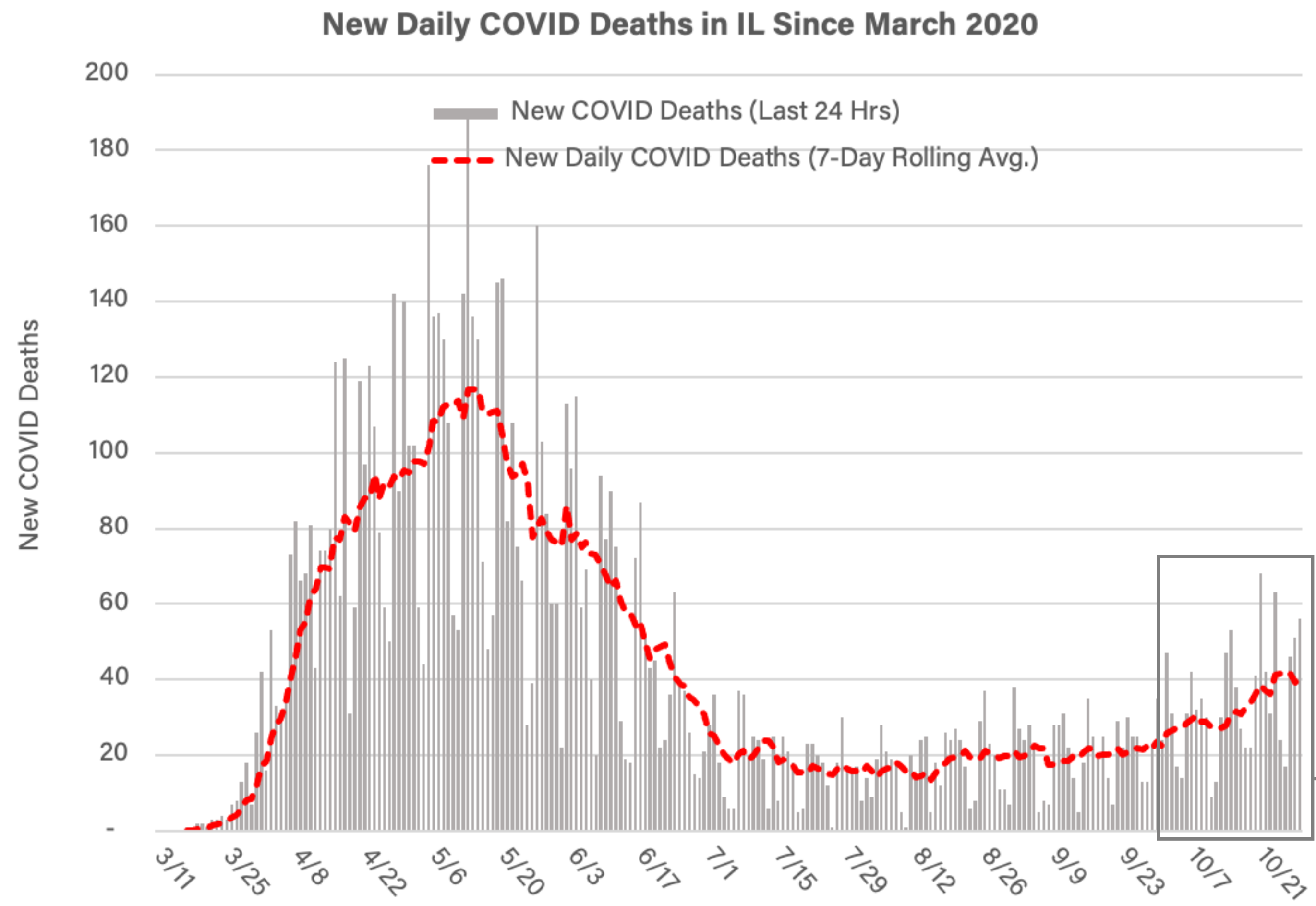
COVID PATIENTS IN ICU **UP 61%** SINCE OCT. 1



COVID PATIENTS ON VENTILATORS **UP 63%** SINCE OCT. 1



NEW COVID DEATHS **UP 82%** SINCE OCT. 1



The seal of the State of Illinois is a circular emblem. It features an eagle with wings spread, perched on a shield with vertical stripes. The eagle is surrounded by a wreath. The text "SEAL OF THE STATE OF ILLINOIS" is written around the top inner edge of the seal. Below the eagle, the date "AUG. 26TH 1818" is inscribed. The words "NATIONAL UNION" are also visible within the seal's design.

COVID-19 Update

State of Illinois

Thursday, October 29, 2020